

ABSOLUTE AUCTION

THURSDAY, SEPTEMBER 18, 2025, 12:30 PM
OPEN HOUSE AUCTION DAY AT 10:30 AM



74-UNIT APARTMENT COMPLEX ON 8.4 ACRES

Plain Twp., Stark Co.,
OH, Plain Local Schools

3700 MARTINDALE RD. NE,
CANTON, OH 44714

LIVE AUCTION WITH ONLINE BIDDING AVAILABLE

Opportunity presents this one-owner family property, built by their father and managed daily. Stark Co. parcel #5200492. Comprises 74 units total, all blacktop plus carports and private garages for many units. Situated on 8.4 acres. 2024 gross rents \$516,000. Online bidding available.

www.kikoauctions.com | 800.533.5456

Information is believed to be
accurate but not guaranteed.
KIKO Auctioneers



MLS



*Scan for auction
details, including
directions.*

*Absolute Auction.
All sells to the
highest bidder on
location.*



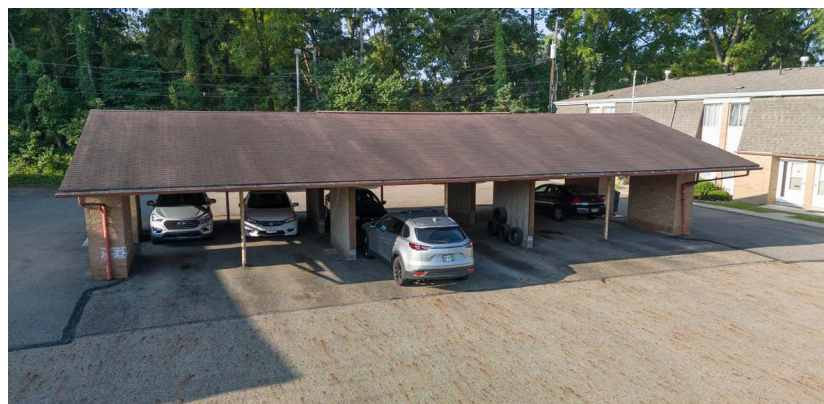
Descriptions:

- **3700 Martindale:** 6-unit, 2-bedroom townhouses w/ basements and 1.5 baths. Carport parking. Gas furnaces w/ C/A. Individual metered gas & electric.
- **3702 Martindale:** 6-unit, 2-bedroom townhouses w/ basements and 1.5 baths. Carport parking. Gas furnaces w/ C/A. Individual metered gas & electric.
- **3704 Martindale:** 6-unit, 2-bedroom townhouses w/ basements and 1.5 baths. Carport parking. Gas furnaces w/ C/A. Individual metered gas & electric.
- **3706 Martindale:** 6-unit, 2-bedroom townhouses w/ basements and 1.5 baths. Carport parking. Gas furnaces w/ C/A. Individual metered gas & electric.
- **3708 Martindale:** 6-unit, 2-bedroom townhouses w/ basements and 1.5 baths. Carport parking. Gas furnaces w/ C/A. Individual metered gas & electric.
- **3710 Martindale:** 6-unit, 2-bedroom townhouses w/ basements and private garages. 1.5 baths. Gas furnaces w/ C/A. Individual meters gas & electric.
- **3712 Martindale:** 6-unit, 2-bedroom townhouses w/ basements and private garages. 1.5 baths. Gas furnaces w/ C/A. Individual meters gas & electric.
- **3714 Martindale:** 12-unit, 1-bedroom, 1-bath, all electric baseboards. Blacktop parking. Individual metered electric.
- **3716 Martindale:** 8-unit, 2-bedroom, 1-bath townhouses. Gas furnaces w/ C/A. Blacktop parking. Individual metered gas & electric.
- **3718 Martindale:** 12-unit, 1-bedroom, 1-bath. All electric baseboards. Blacktop parking. Individual metered electric. Blacktop parking.

Note: Each building has separate water meters. Landlord pays water/sewer & trash. Please respect tenants' privacy. Call George Kiko with any questions.

Terms On Real Estate: 10% down auction day, balance due at closing. A 10% buyer's premium will be added to the highest bid to establish the purchase price. Any desired inspections must be made prior to bidding. All information contained herein was derived from sources believed to be correct. Information is believed to be accurate but not guaranteed.

Auction By Order Of: LFD Ltd.



GEORGE P. KIKO
AUCTIONEER/REALTOR®
 330.418.1095
george@kikocompany.com



REALTORS
 AUCTIONEERS
 ADVISORS

Information is believed to be
 accurate but not guaranteed.
 KIKO Auctioneers

